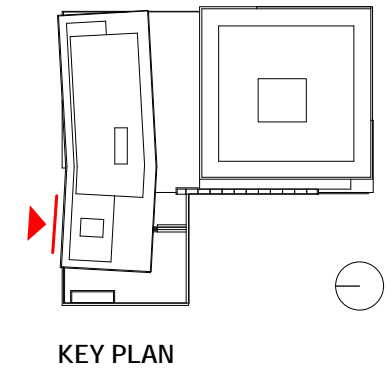
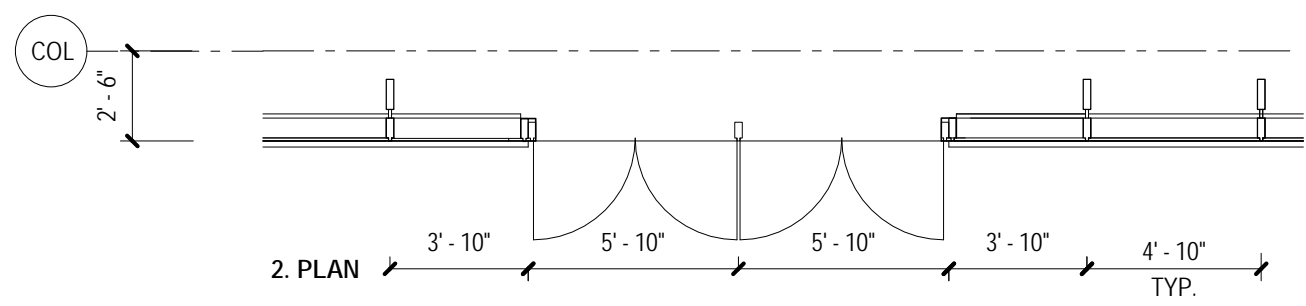
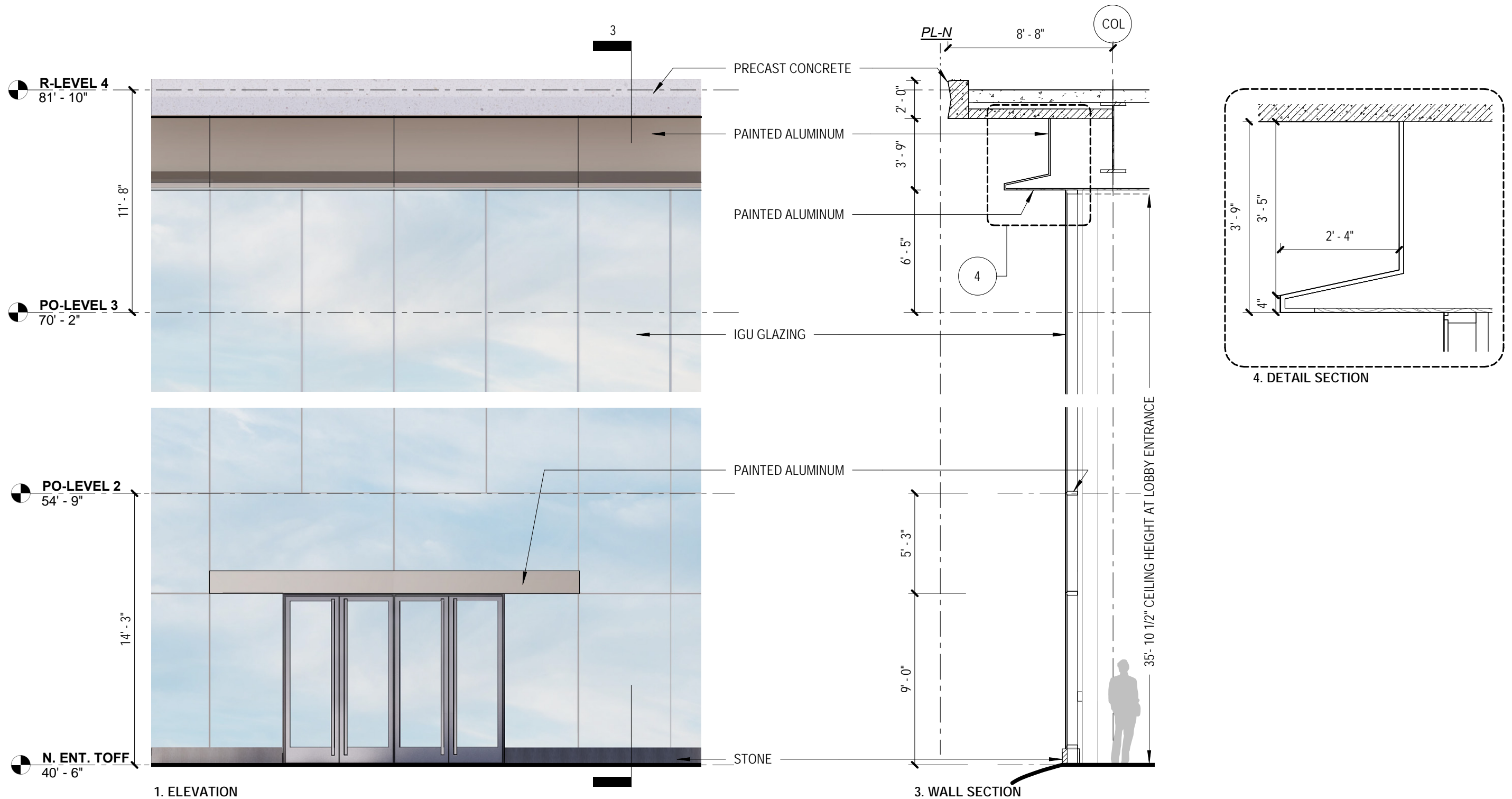


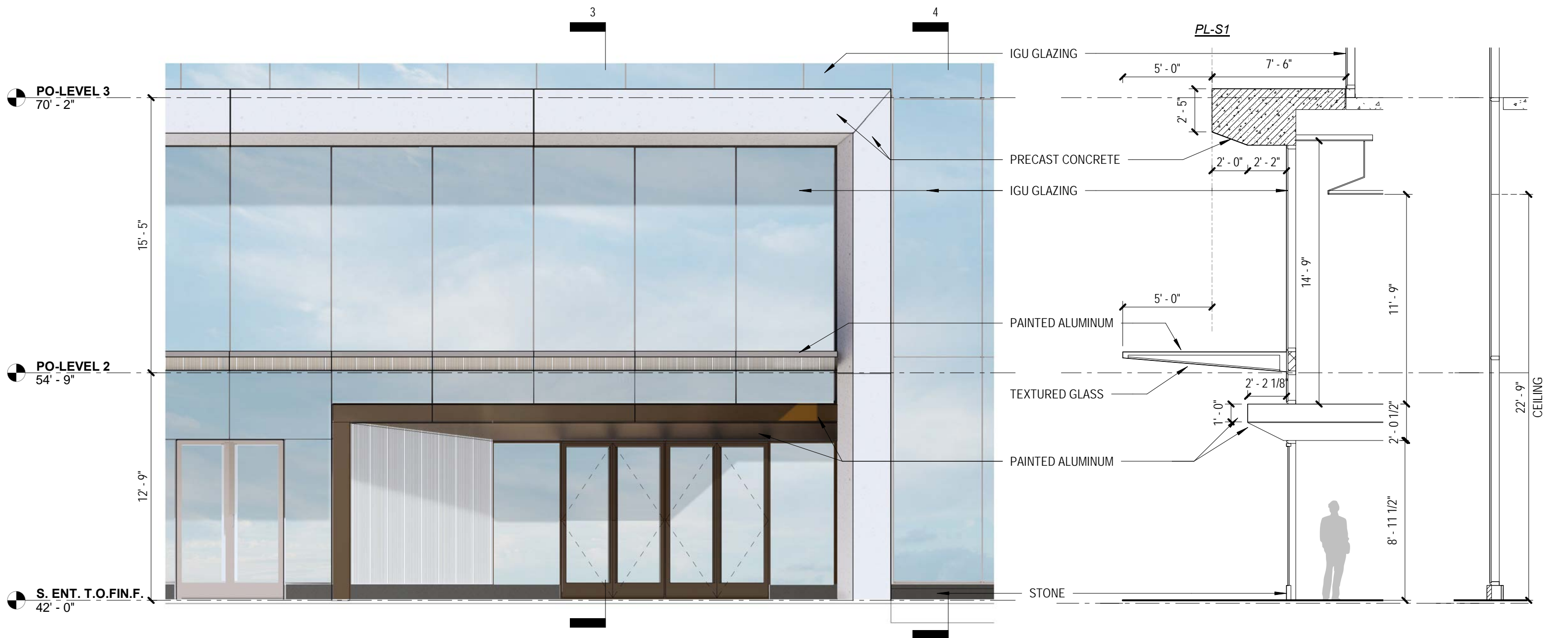
5-0: CCIII & CCIV Wall Systems



Exterior Details - Podium North Lobby

PUD Stage II Filing: Capitol Crossing III LLC and Capitol Crossing IV LLC: Square 566, Lots 861-862 (part of Record Lot 50)

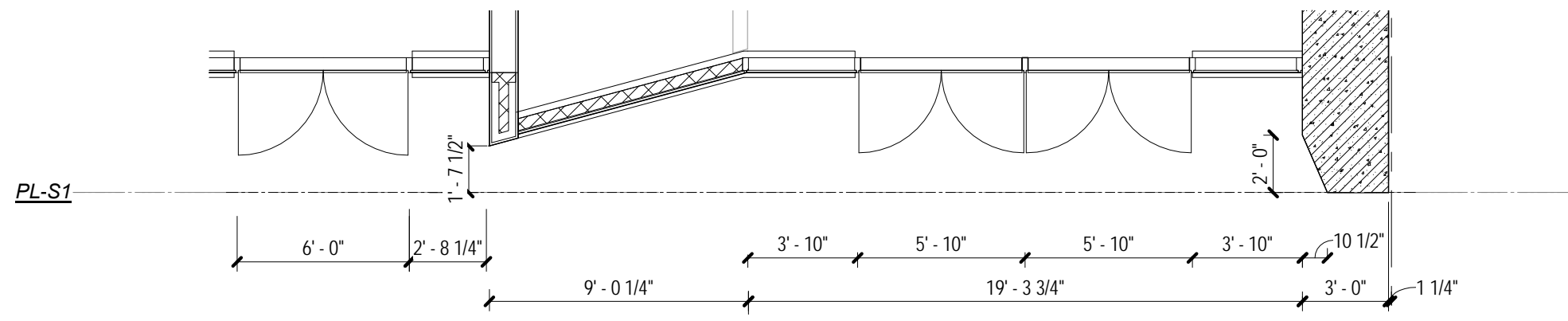
NOTE: ALL WINDOW GLAZING SYSTEM DETAILS AND SYSTEMS CONNECTIONS INDICATED ARE PRELIMINARY. ALL FACADE MATERIALS AND PROFILES ARE PRELIMINARY. FINAL WINDOW GLAZING SYSTEMS DETAILS AND CONNECTIONS AND MATERIALS MAY VARY



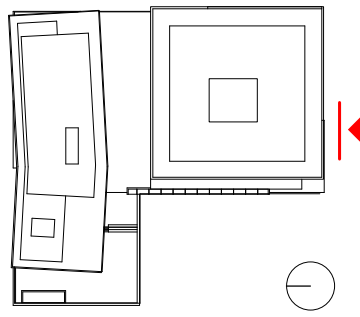
1. ELEVATION

3. SECTION

4. SECTION



2. PLAN

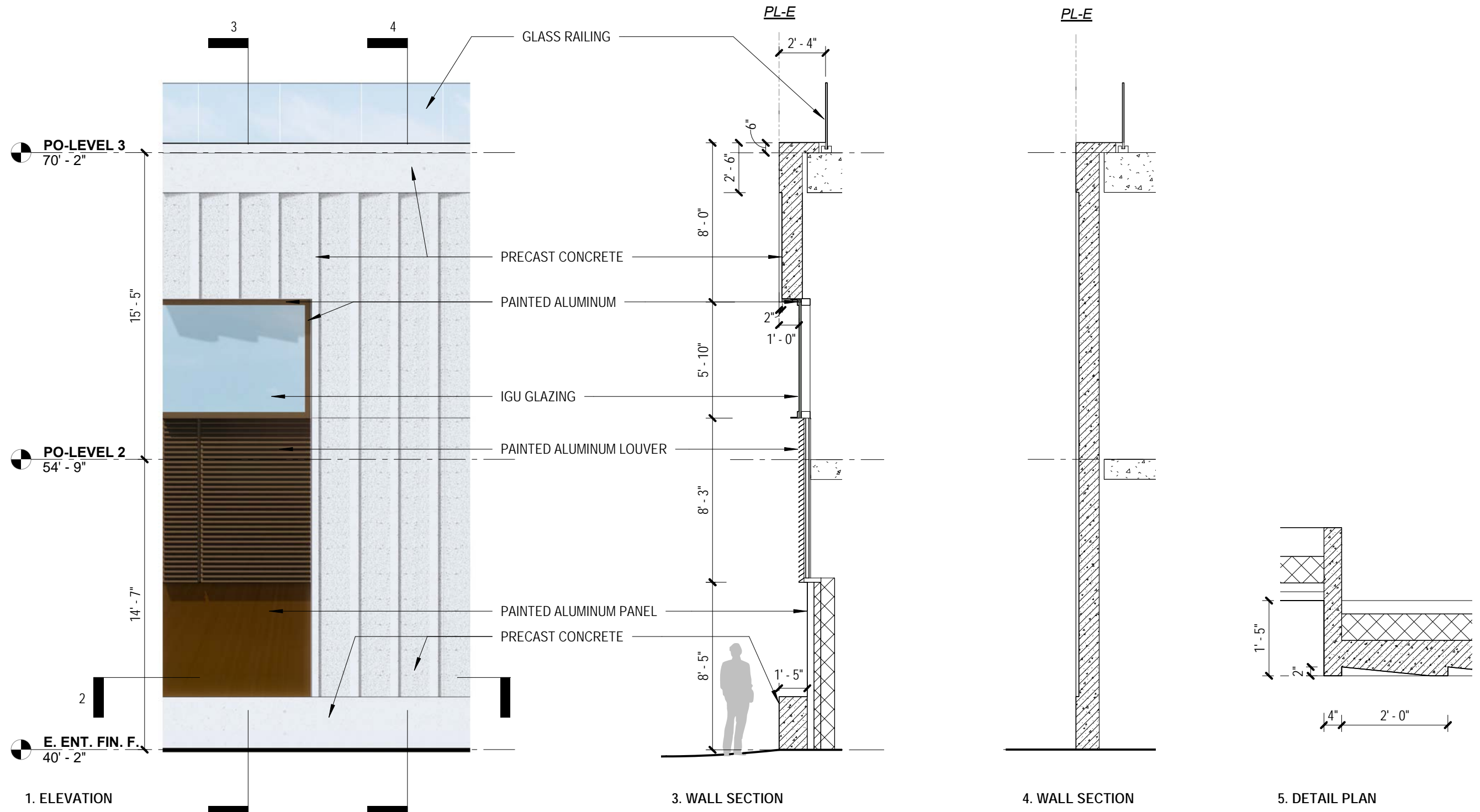


KEY PLAN

Exterior Details - Podium South Lobby

PUD Stage II Filing: Capitol Crossing III LLC and Capitol Crossing IV LLC: Square 566, Lots 861-862 (part of Record Lot 50)

NOTE: ALL WINDOW GLAZING SYSTEM DETAILS AND SYSTEMS CONNECTIONS INDICATED ARE PRELIMINARY. ALL FACADE MATERIALS AND PROFILES ARE PRELIMINARY. FINAL WINDOW GLAZING SYSTEMS DETAILS AND CONNECTIONS AND MATERIALS MAY VARY



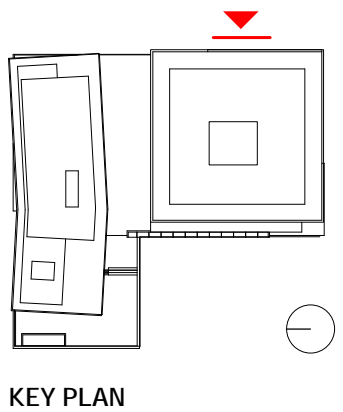
1. ELEVATION

3. WALL SECTION

4. WALL SECTION

5. DETAIL PLAN

2. PLAN

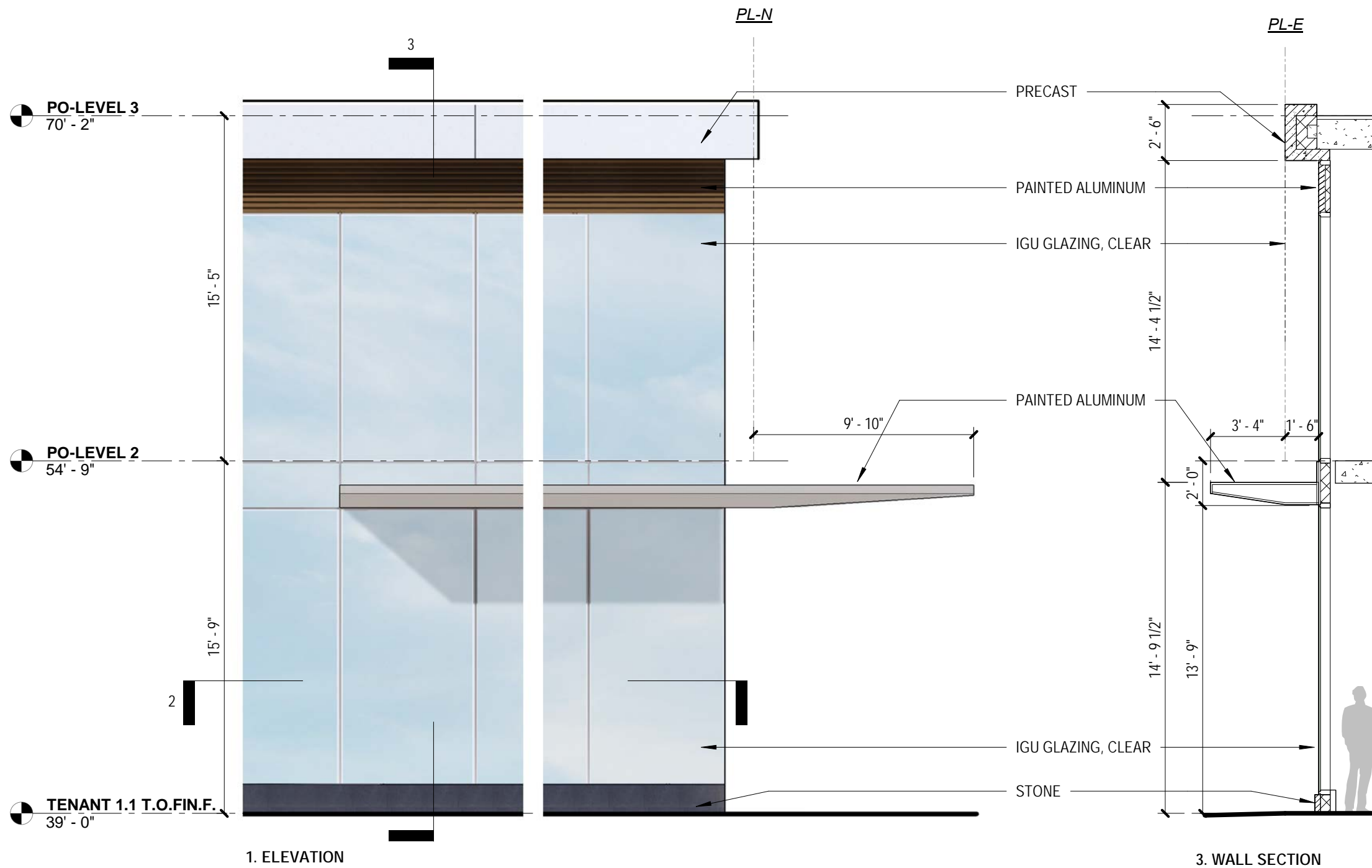


KEY PLAN

Exterior Details - Podium East - 2nd Ave (South)

PUD Stage II Filing: Capitol Crossing III LLC and Capitol Crossing IV LLC: Square 566, Lots 861-862 (part of Record Lot 50)

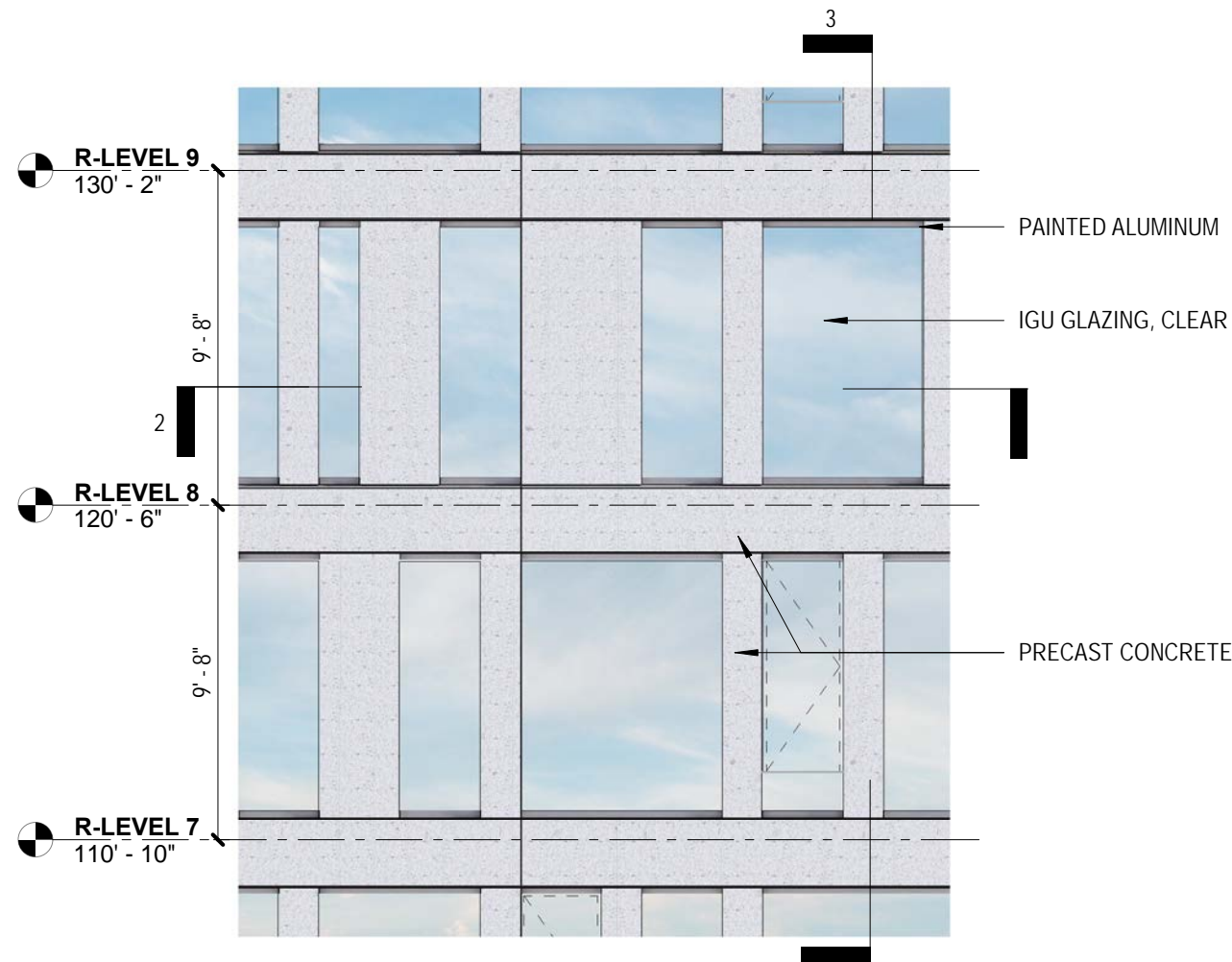
NOTE: ALL WINDOW GLAZING SYSTEM DETAILS AND SYSTEMS CONNECTIONS INDICATED ARE PRELIMINARY. ALL FACADE MATERIALS AND PROFILES ARE PRELIMINARY. FINAL WINDOW GLAZING SYSTEMS DETAILS AND CONNECTIONS AND MATERIALS MAY VARY



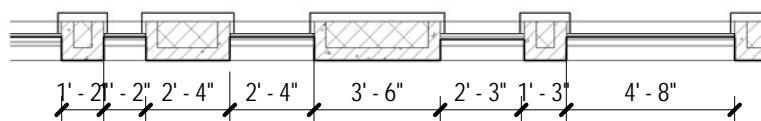
Exterior Details - Podium East - 2nd Ave (North)

PUD Stage II Filing: Capitol Crossing III LLC and Capitol Crossing IV LLC: Square 566, Lots 861-862 (part of Record Lot 50)

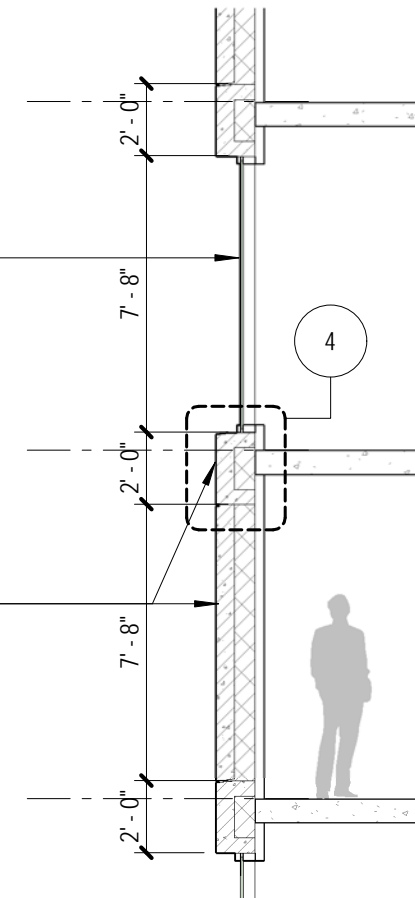
NOTE: ALL WINDOW GLAZING SYSTEM DETAILS AND SYSTEMS CONNECTIONS INDICATED ARE PRELIMINARY. ALL FACADE MATERIALS AND PROFILES ARE PRELIMINARY. FINAL WINDOW GLAZING SYSTEMS DETAILS AND CONNECTIONS AND MATERIALS MAY VARY



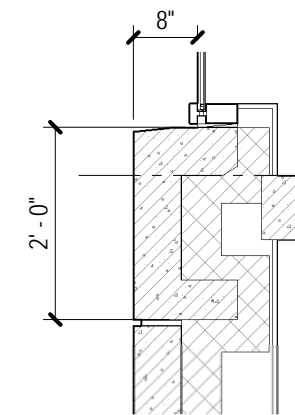
1. ELEVATION



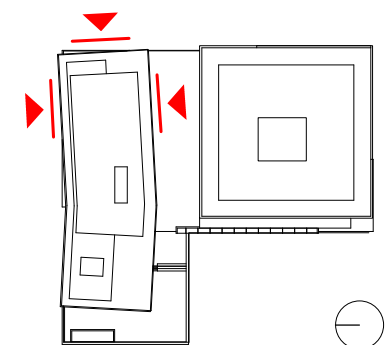
2. PLAN



3. WALL SECTION



4. SECTION DETAIL

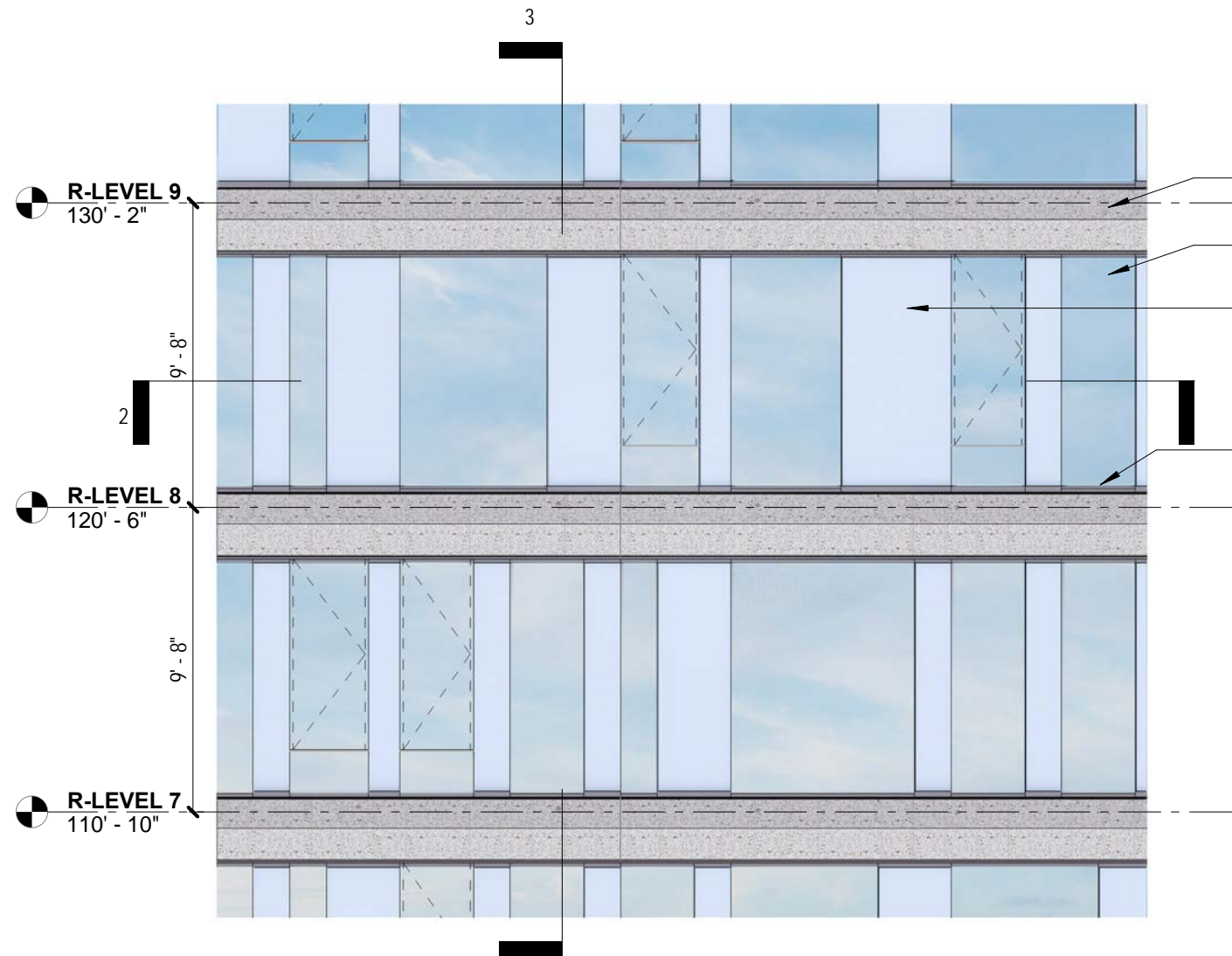


KEY PLAN

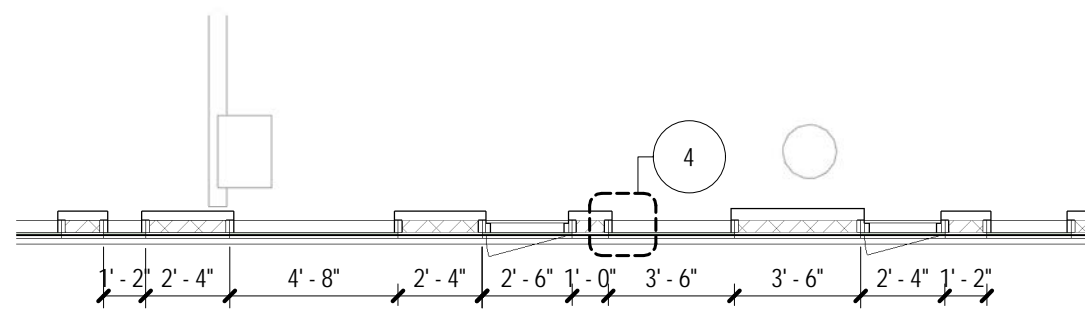
Exterior Details - Residential - Wall Type 1

PUD Stage II Filing: Capitol Crossing III LLC and Capitol Crossing IV LLC: Square 566, Lots 861-862 (part of Record Lot 50)

NOTE: ALL WINDOW GLAZING SYSTEM DETAILS AND SYSTEMS CONNECTIONS INDICATED ARE PRELIMINARY. ALL FACADE MATERIALS AND PROFILES ARE PRELIMINARY. FINAL WINDOW GLAZING SYSTEMS DETAILS AND CONNECTIONS AND MATERIALS MAY VARY

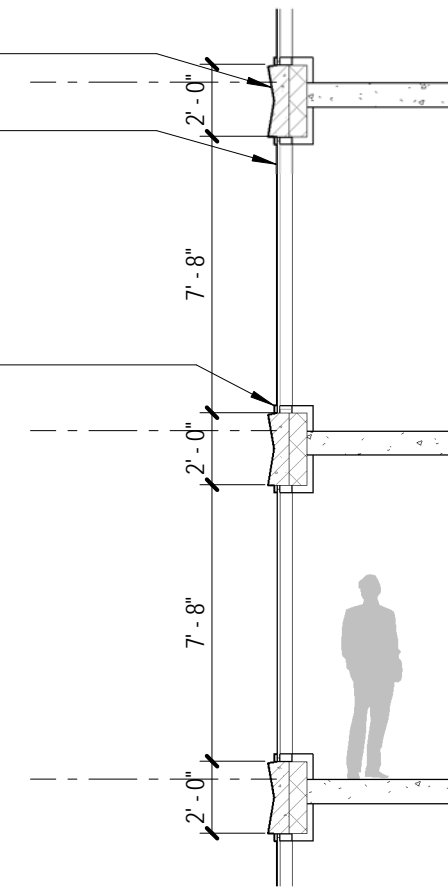


1. ELEVATION

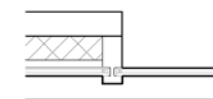


2. PLAN

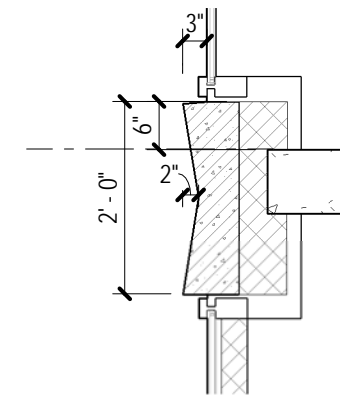
- PRECAST CONCRETE
- IGU GLASS, CLEAR
- IGU GLASS, ACID-ETCH WITH SHADOWBOX BACK PANEL
- PAINTED ALUMINUM



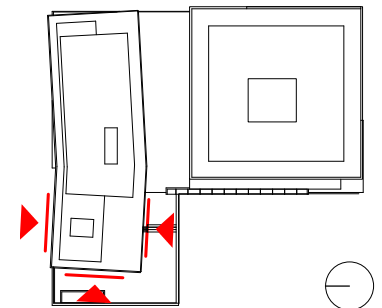
3. WALL SECTION



4. DETAIL - PLAN



5. DETAIL - SECTION

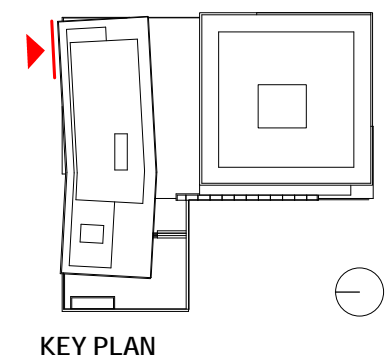
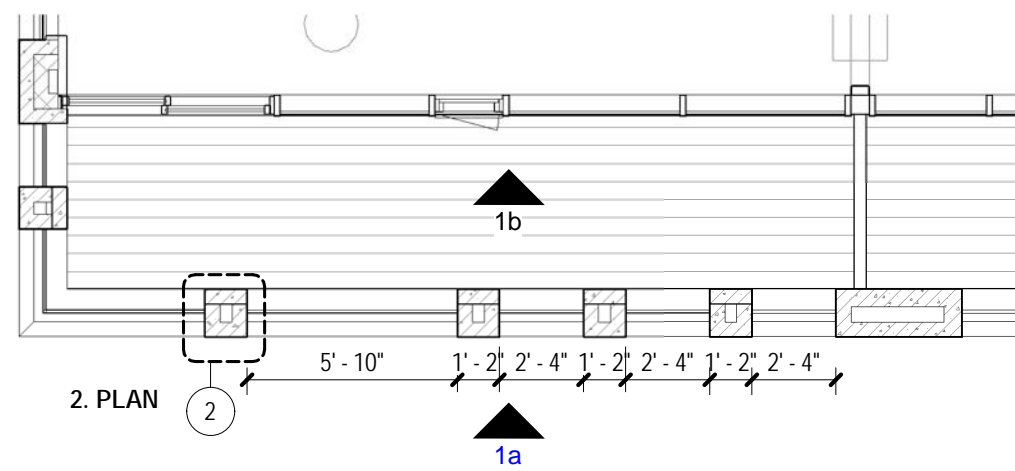
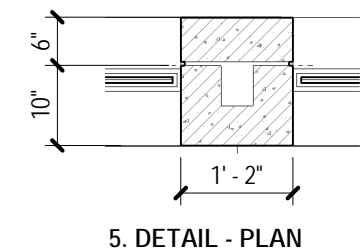
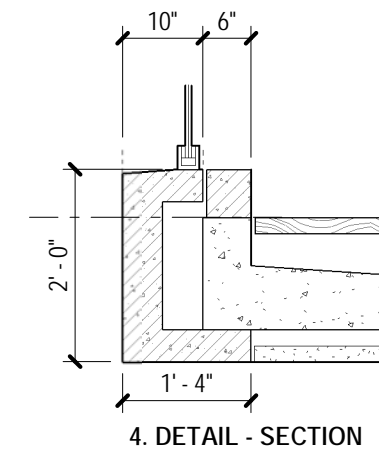
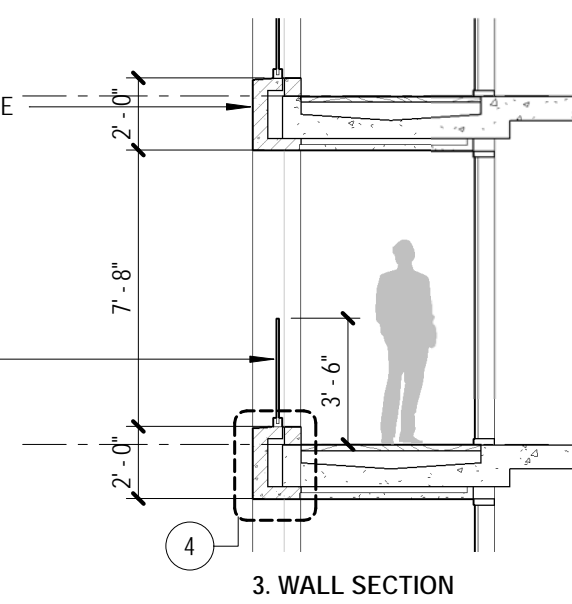
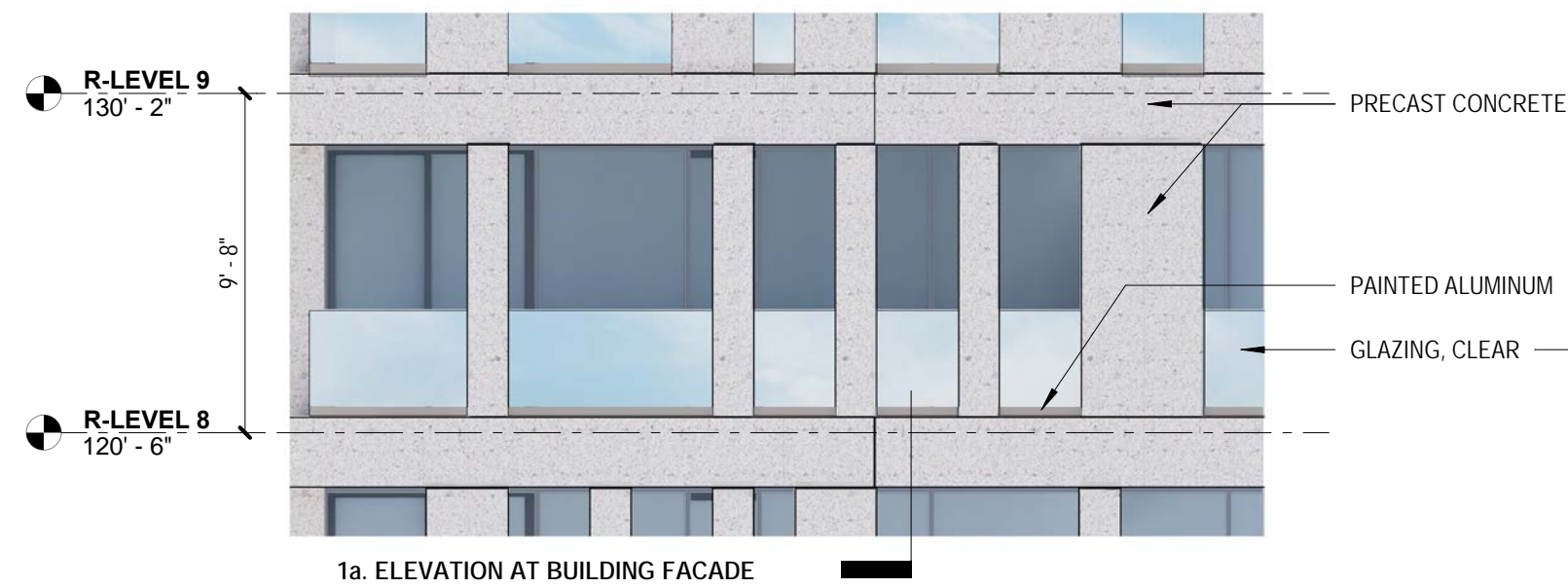
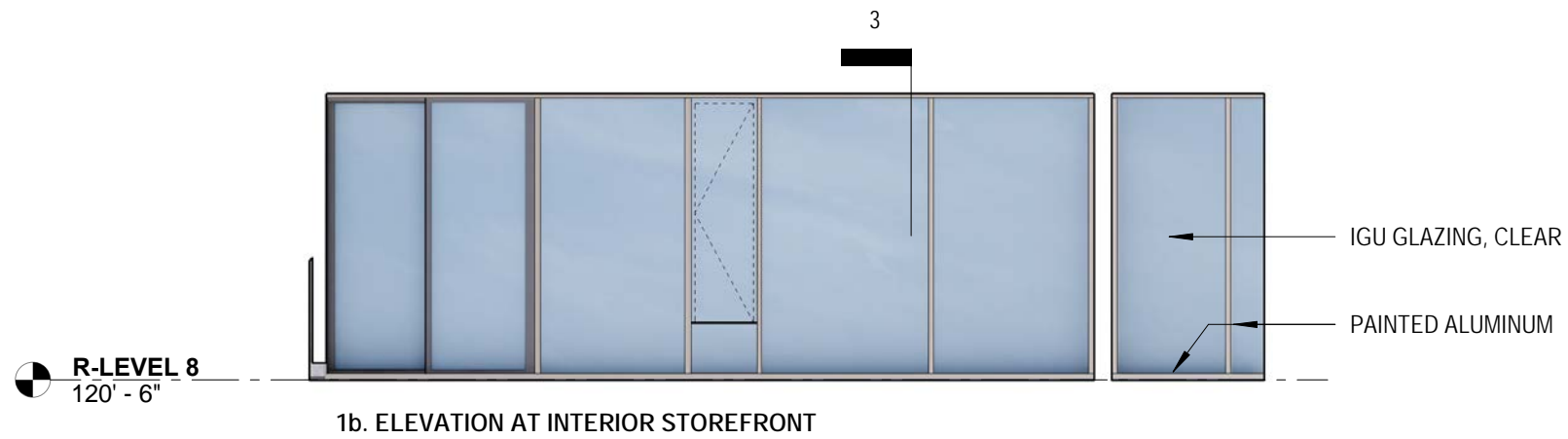


KEY PLAN

Exterior Details - Residential - Wall Type 2

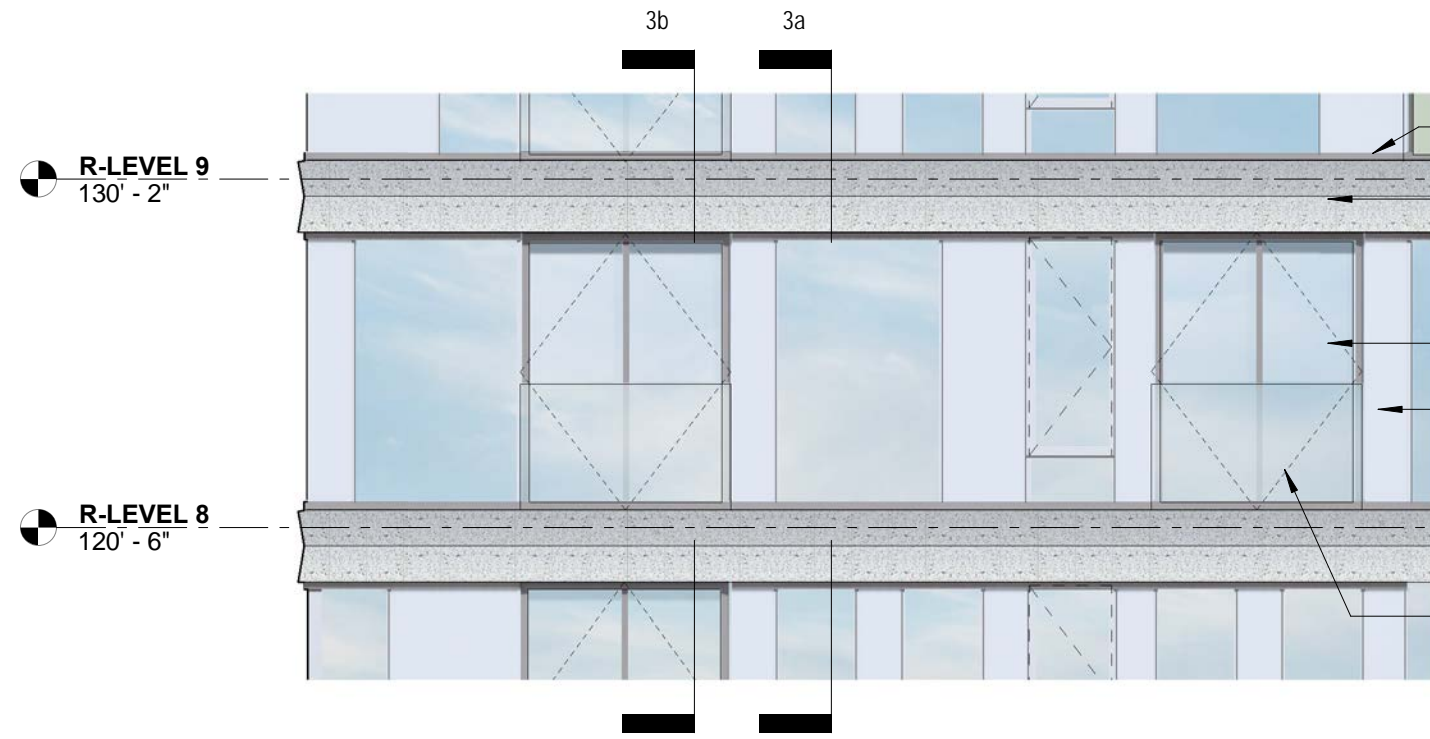
PUD Stage II Filing: Capitol Crossing III LLC and Capitol Crossing IV LLC: Square 566, Lots 861-862 (part of Record Lot 50)

NOTE: ALL WINDOW GLAZING SYSTEM DETAILS AND SYSTEMS CONNECTIONS INDICATED ARE PRELIMINARY. ALL FACADE MATERIALS AND PROFILES ARE PRELIMINARY. FINAL WINDOW GLAZING SYSTEMS DETAILS AND CONNECTIONS AND MATERIALS MAY VARY



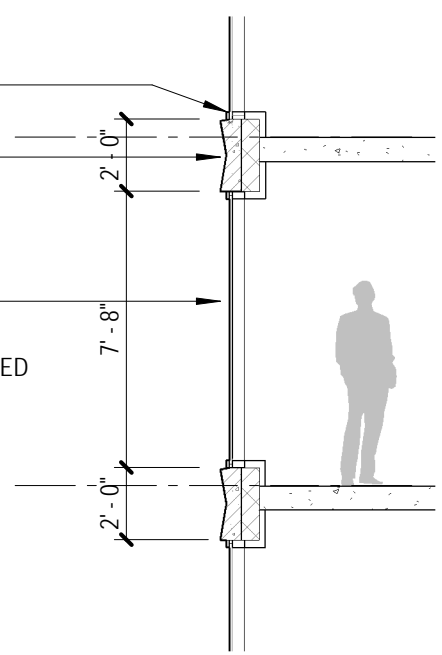
Exterior Details - Residential - Wall Type 1 with Balcony
 PUD Stage II Filing: Capitol Crossing III LLC and Capitol Crossing IV LLC: Square 566, Lots 861-862 (part of Record Lot 50)

NOTE: ALL WINDOW GLAZING SYSTEM DETAILS AND SYSTEMS CONNECTIONS INDICATED ARE PRELIMINARY. ALL FACADE MATERIALS AND PROFILES ARE PRELIMINARY. FINAL WINDOW GLAZING SYSTEMS DETAILS AND CONNECTIONS AND MATERIALS MAY VARY

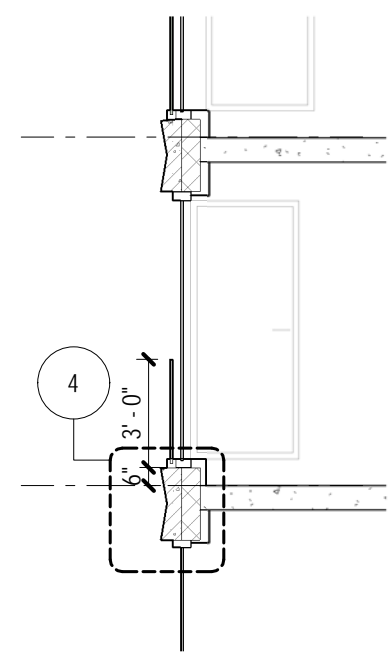


1. ELEVATION AT BUILDING FACADE

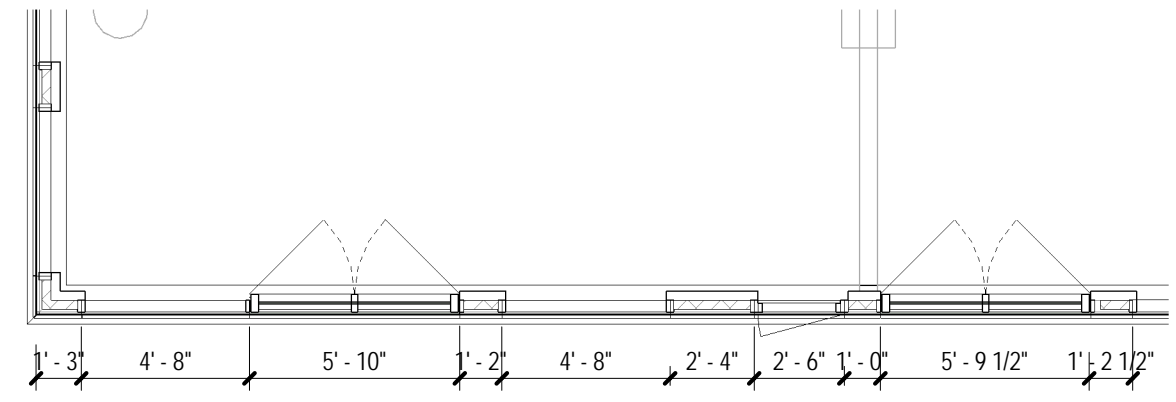
GLAZING, CLEAR
 PRECAST CONCRETE
 IGU GLAZING, CLEAR
 IGU GLAZING, ACID-ETCHED
 GLAZING, CLEAR



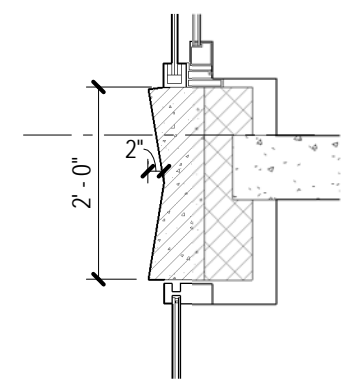
3a.. WALL SECTION



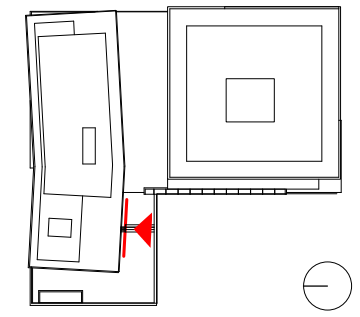
3b. WALL SECTION



2. PLAN



4. DETAIL - SECTION

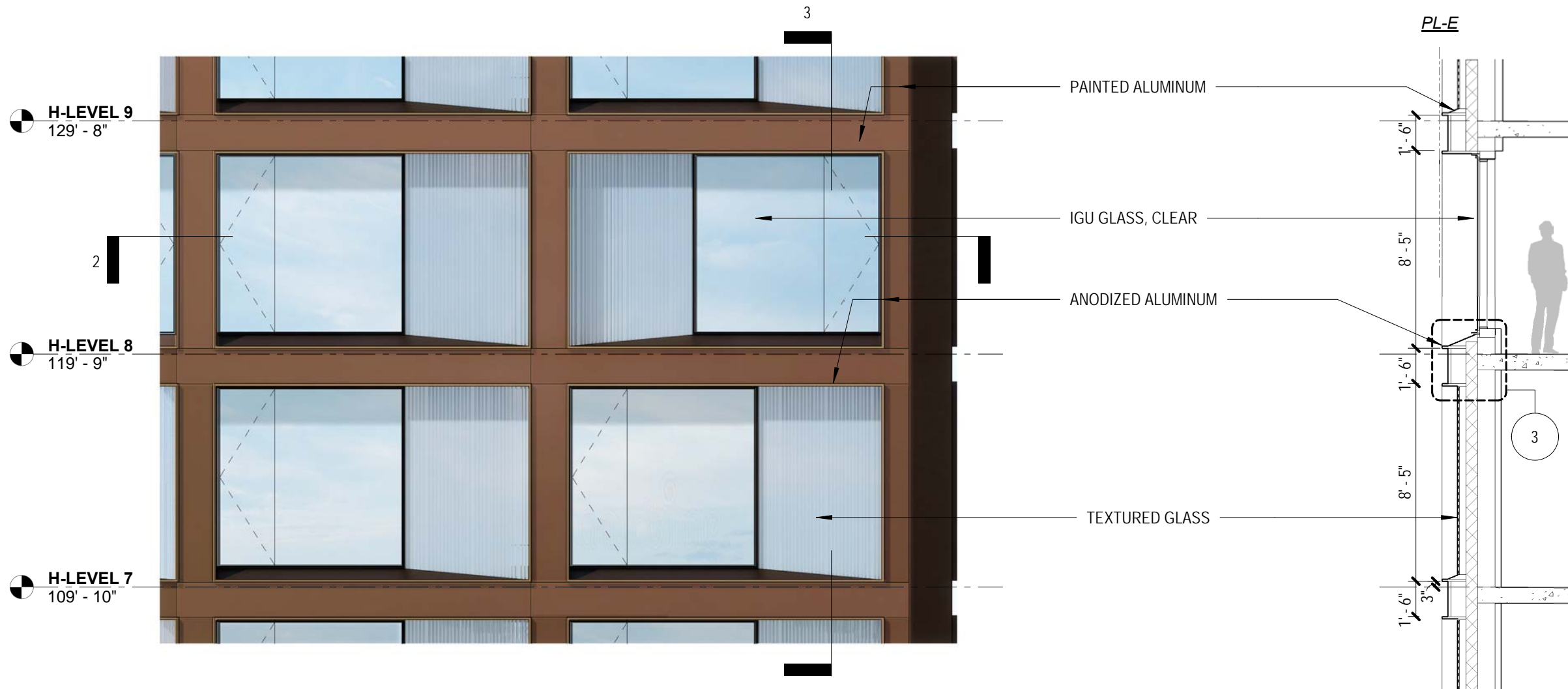


KEY PLAN

Exterior Details - Residential - Wall Type 1 with Juliet Balcony

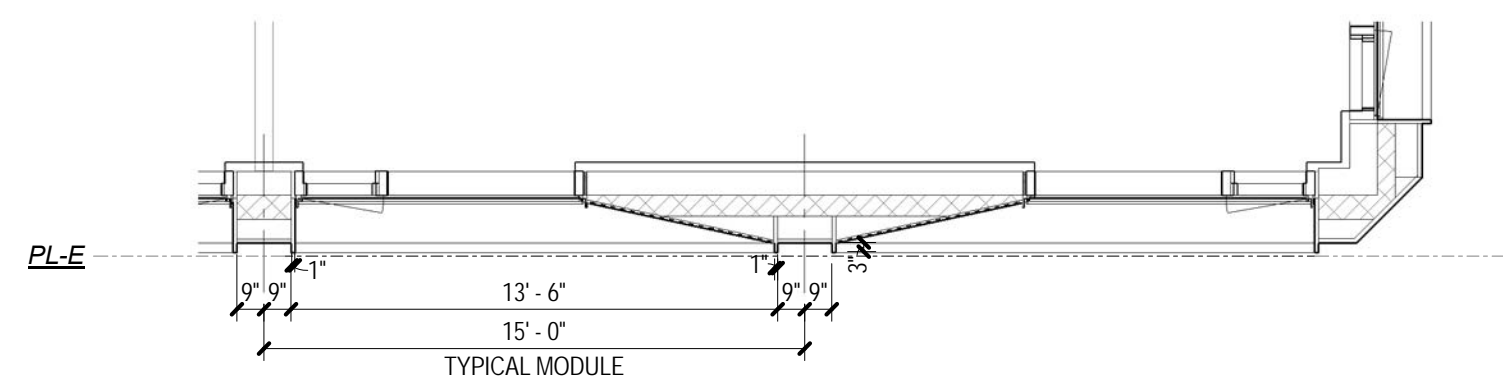
PUD Stage II Filing: Capitol Crossing III LLC and Capitol Crossing IV LLC: Square 566, Lots 861-862 (part of Record Lot 50)

NOTE: ALL WINDOW GLAZING SYSTEM DETAILS AND SYSTEMS CONNECTIONS INDICATED ARE PRELIMINARY. ALL FACADE MATERIALS AND PROFILES ARE PRELIMINARY. FINAL WINDOW GLAZING SYSTEMS DETAILS AND CONNECTIONS AND MATERIALS MAY VARY

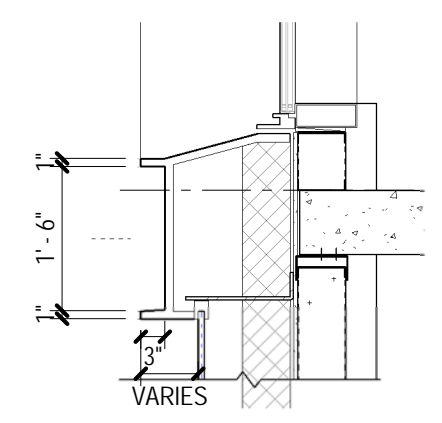


1. ELEVATION

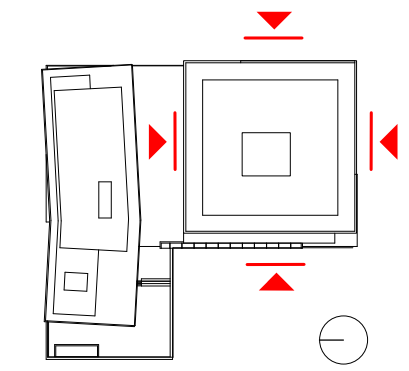
3. WALL SECTION



2. PLAN



3. SECTION DETAIL

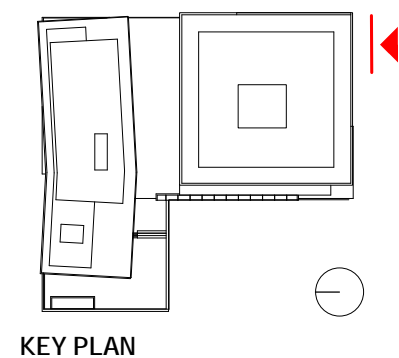
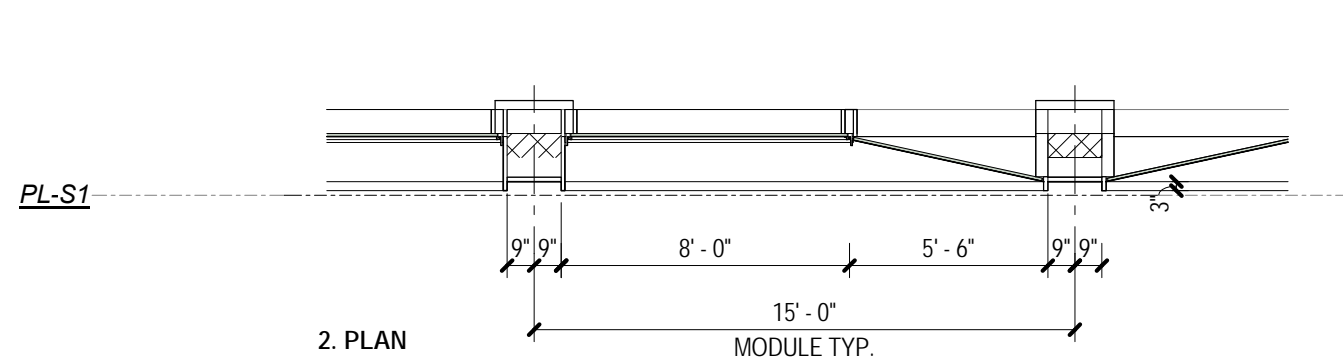
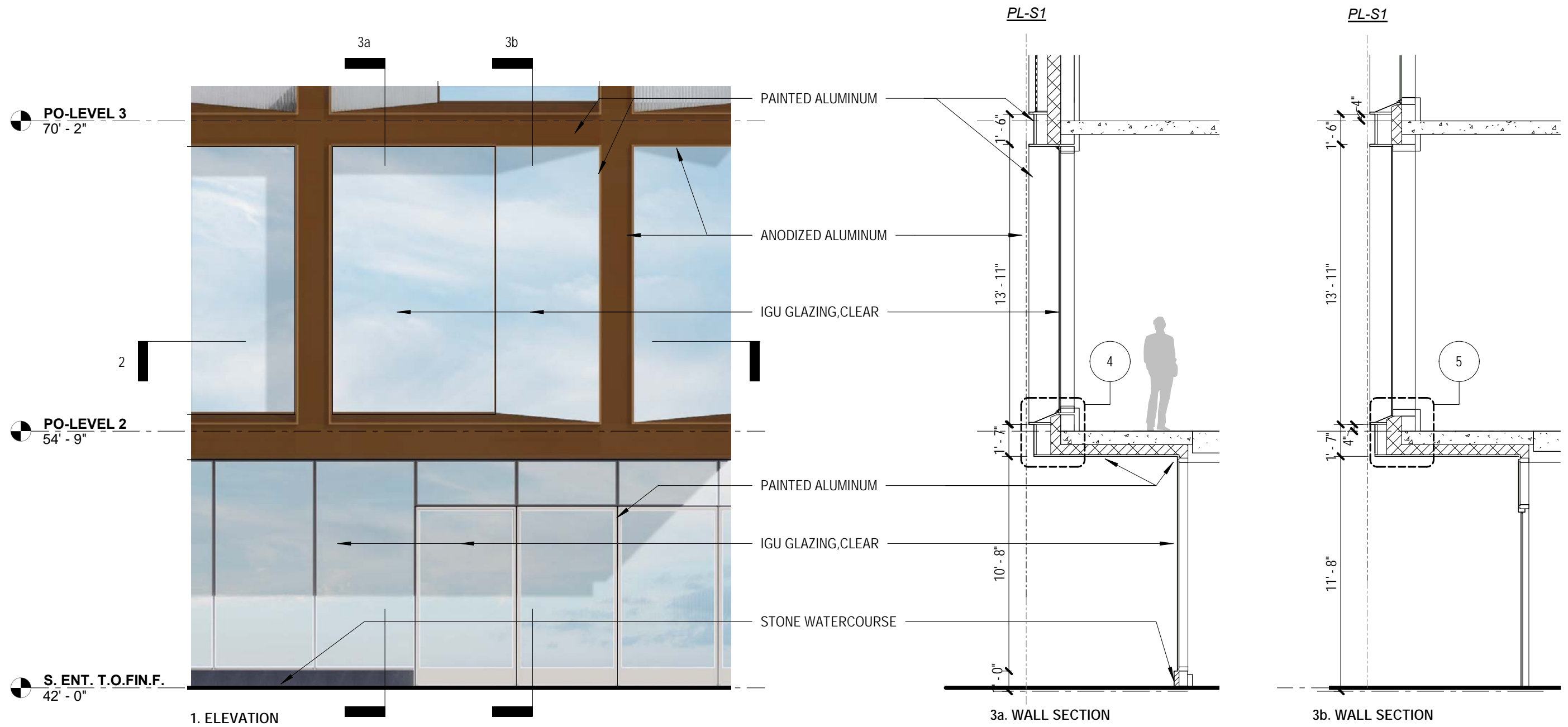


KEY PLAN

Exterior Details - Hotel - Wall Type 1 (Typical)

PUD Stage II Filing: Capitol Crossing III LLC and Capitol Crossing IV LLC: Square 566, Lots 861-862 (part of Record Lot 50)

NOTE: ALL WINDOW GLAZING SYSTEM DETAILS AND SYSTEMS CONNECTIONS INDICATED ARE PRELIMINARY. ALL FACADE MATERIALS AND PROFILES ARE PRELIMINARY. FINAL WINDOW GLAZING SYSTEMS DETAILS AND CONNECTIONS AND MATERIALS MAY VARY

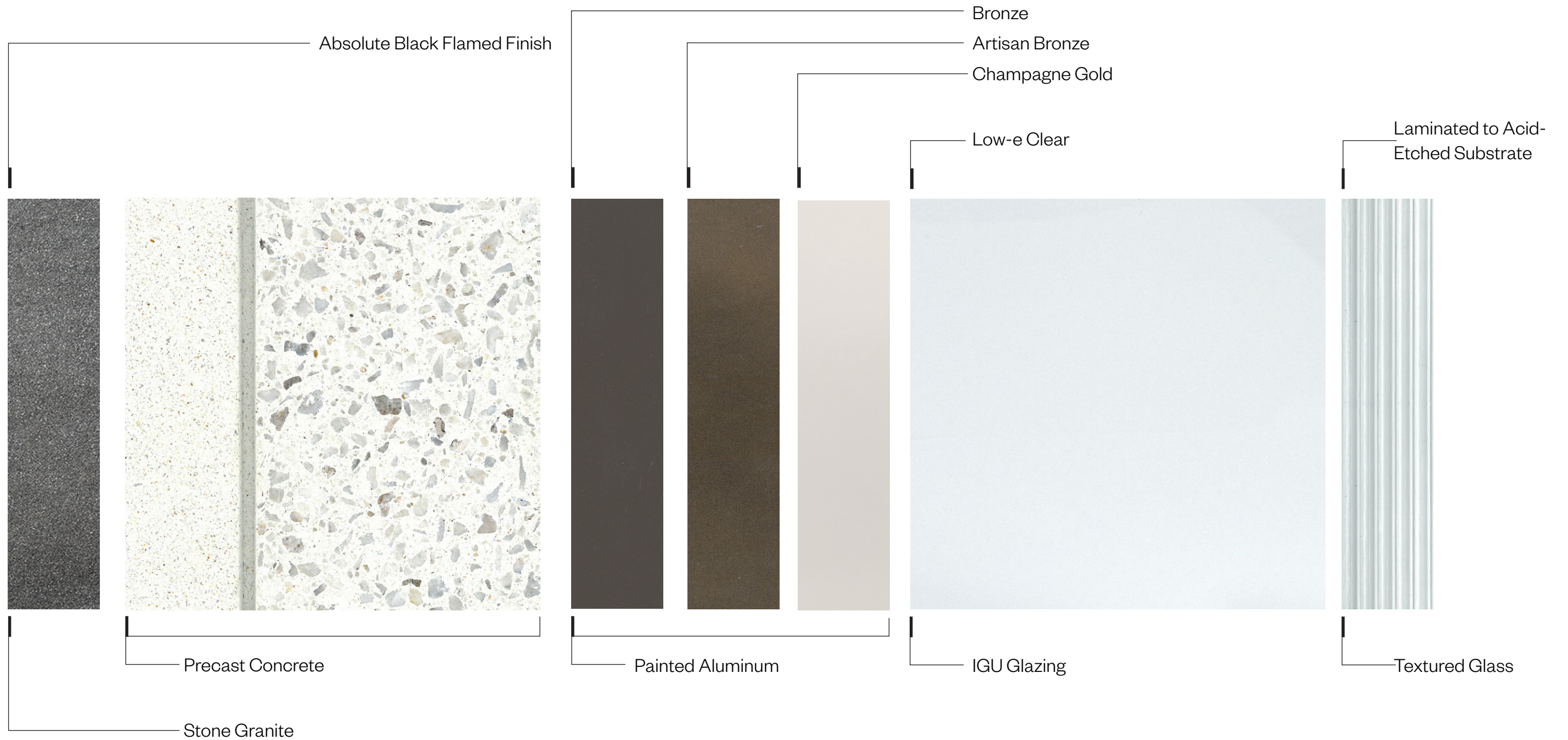


Exterior Details - Hotel - Wall Type 1 (L2 & Podium)

PUD Stage II Filing: Capitol Crossing III LLC and Capitol Crossing IV LLC: Square 566, Lots 861-862 (part of Record Lot 50)

NOTE: ALL WINDOW GLAZING SYSTEM DETAILS AND SYSTEMS CONNECTIONS INDICATED ARE PRELIMINARY. ALL FACADE MATERIALS AND PROFILES ARE PRELIMINARY. FINAL WINDOW GLAZING SYSTEMS DETAILS AND CONNECTIONS AND MATERIALS MAY VARY

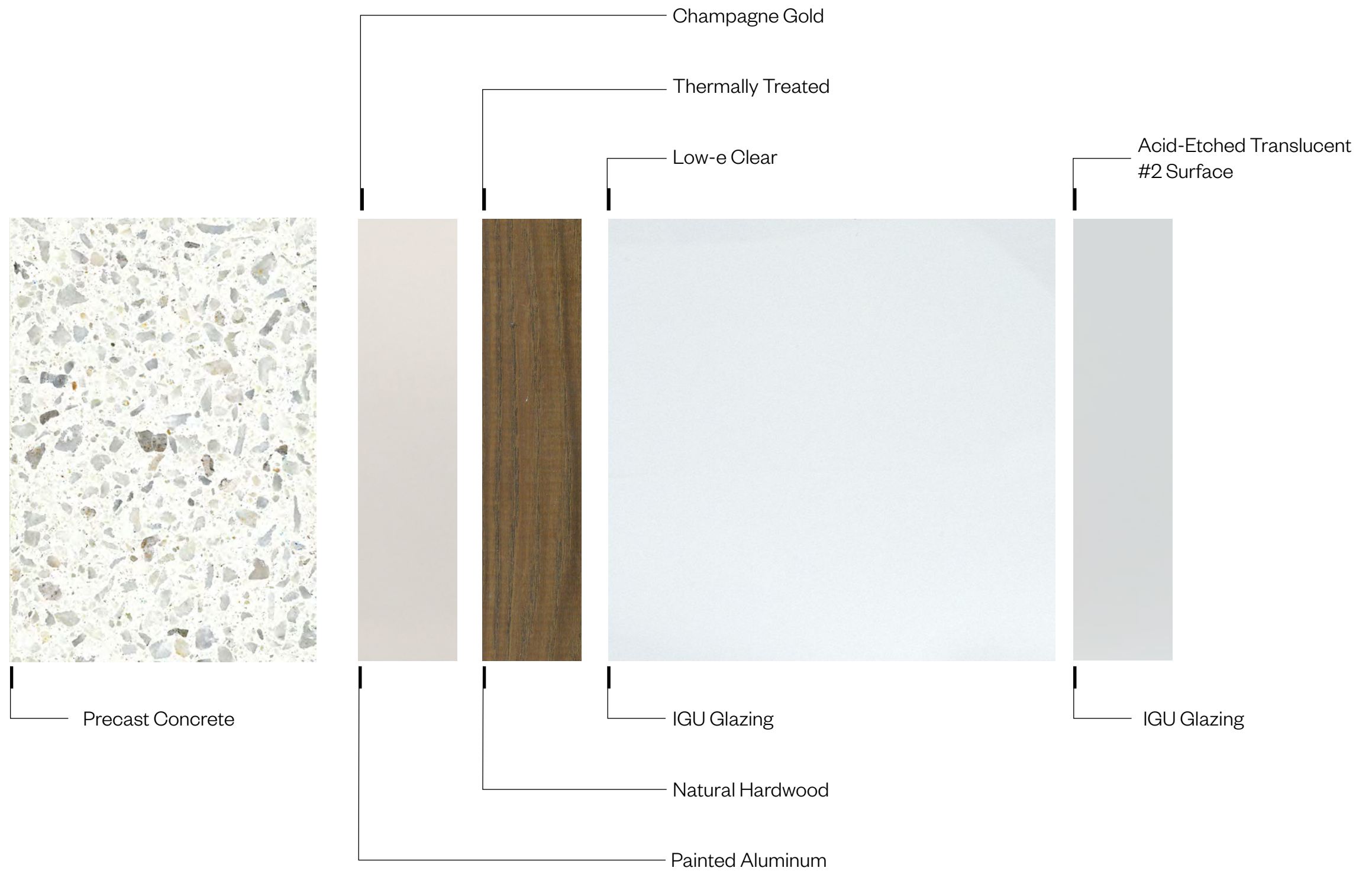
6-0: CCIII & CCIV Building Materials



Building Materials - Podium

PUD Stage II Filing: Capitol Crossing III LLC and Capitol Crossing IV LLC: Square 566, Lots 861-862 (part of Record Lot 50)

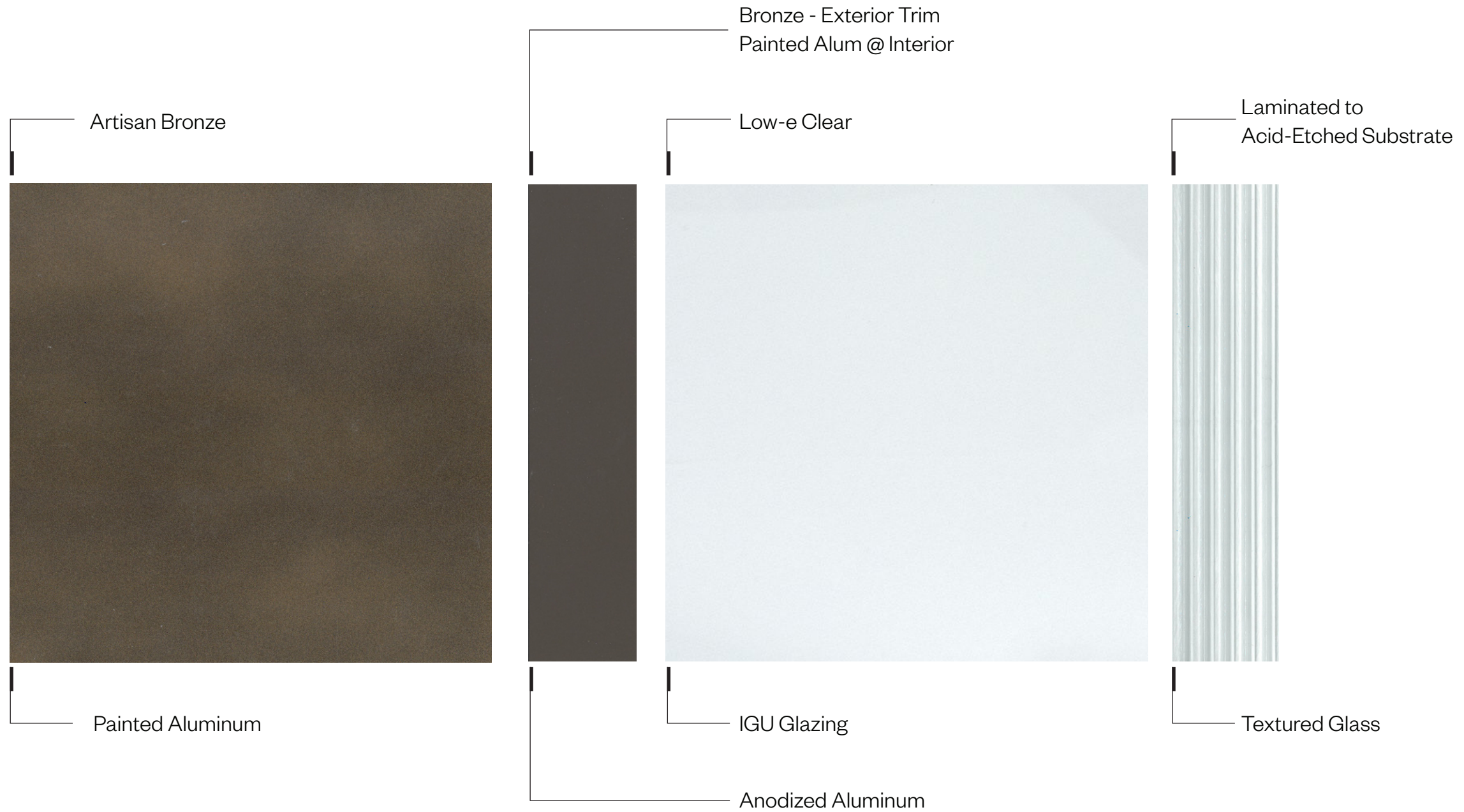
NOTE: ALL MATERIALS AND COLORS SHOWN ARE PRELIMINARY. FINAL MATERIALS AND COLOR MAY VARY.



Building Materials - Residential

PUD Stage II Filing: Capitol Crossing III LLC and Capitol Crossing IV LLC: Square 566, Lots 861-862 (part of Record Lot 50)

NOTE: ALL MATERIALS AND COLORS SHOWN ARE PRELIMINARY. FINAL MATERIALS AND COLOR MAY VARY.

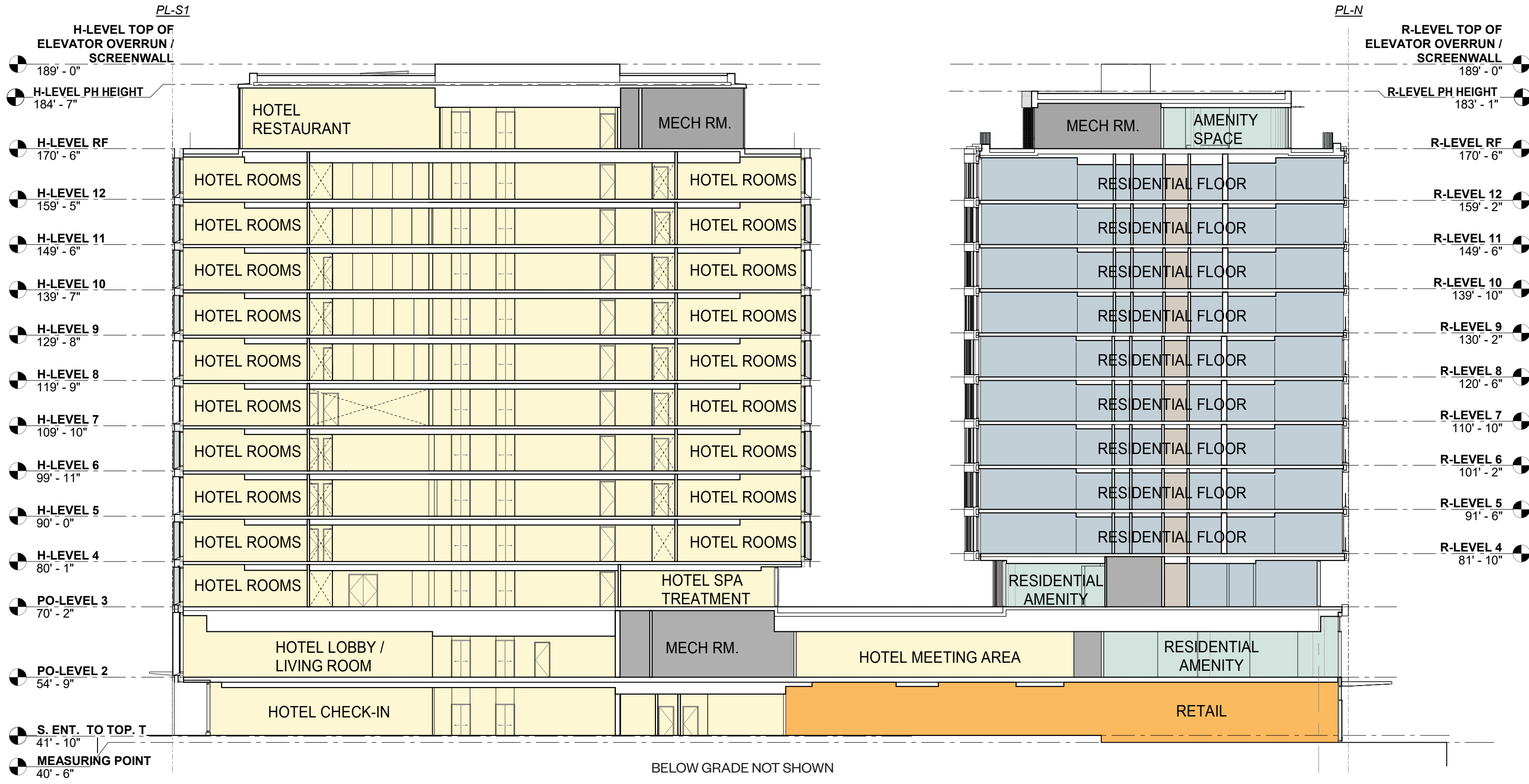


Building Materials - Hotel

PUD Stage II Filing: Capitol Crossing III LLC and Capitol Crossing IV LLC: Square 566, Lots 861-862 (part of Record Lot 50)

NOTE: ALL MATERIALS AND COLORS SHOWN ARE PRELIMINARY. FINAL MATERIALS AND COLOR MAY VARY.

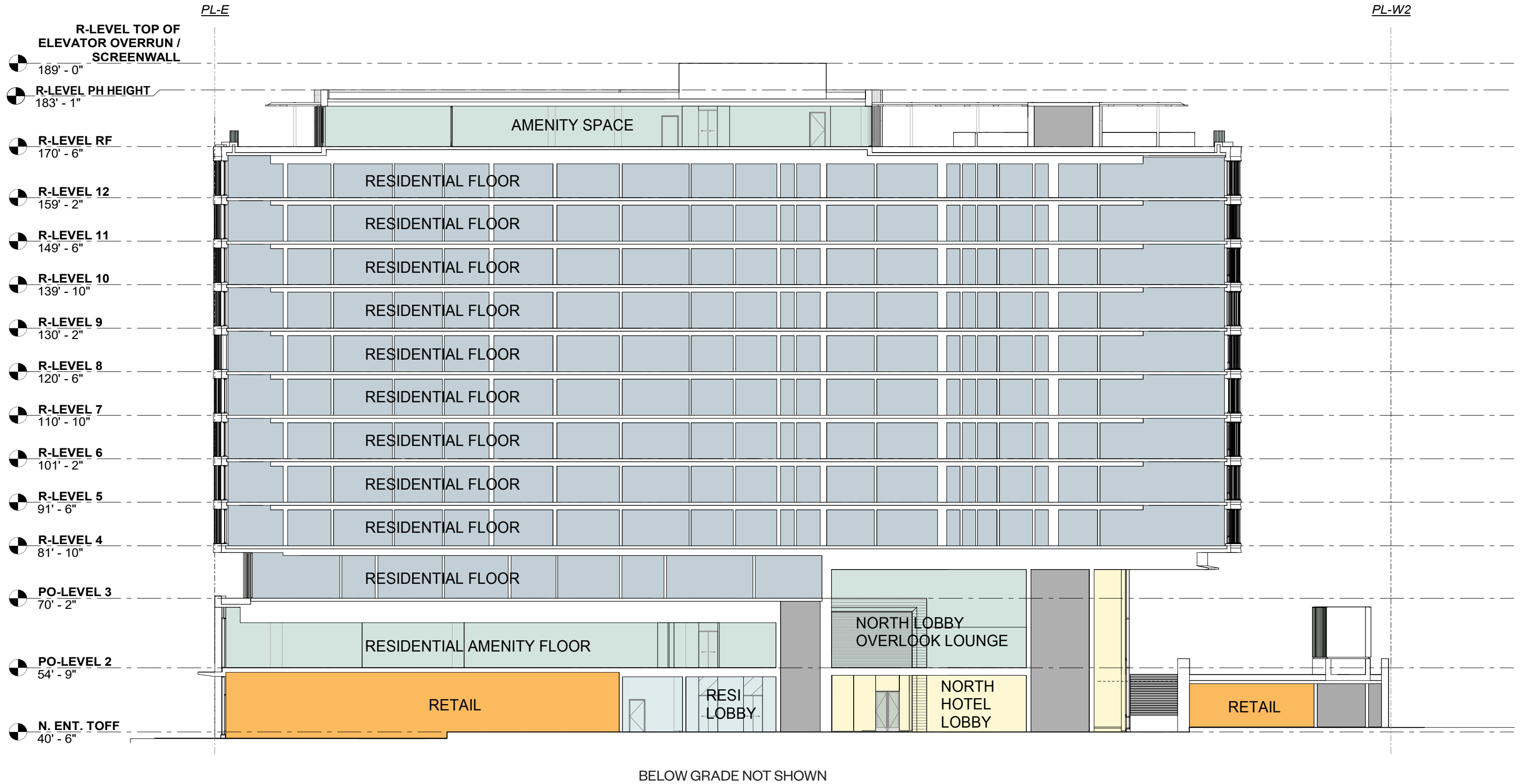
7-0: CCIII & CCIV Building Sections



NOTE:
BELOW GRADE SUBMITTED AND APPROVED OF PUD STAGE 1 OMITTED FOR CLARITY

Residential & Hotel North-South Section

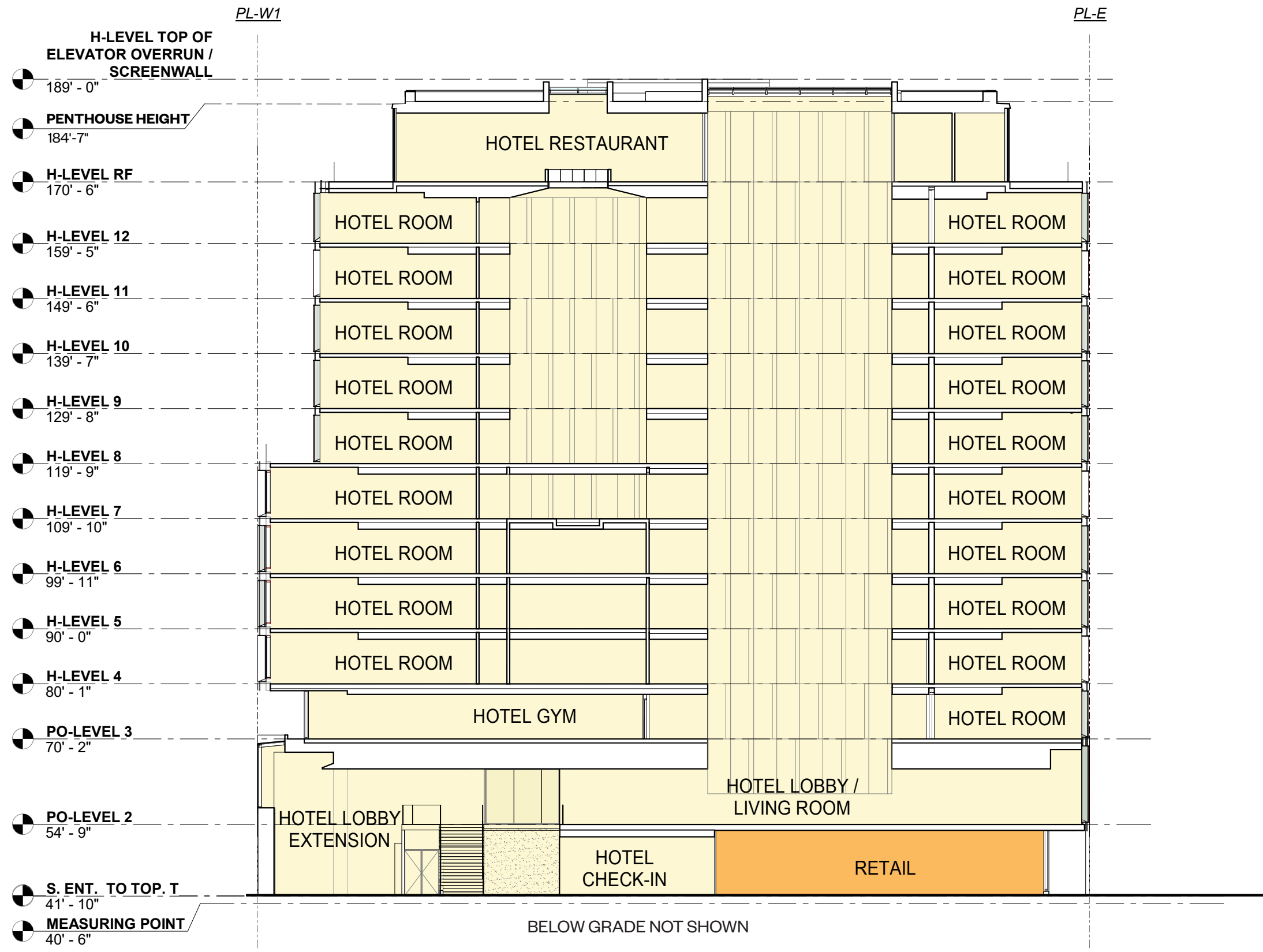
PUD Stage II Filing: Capitol Crossing III LLC and Capitol Crossing IV LLC: Square 566, Lots 861-862 (part of Record Lot 50)



NOTE:
BELOW GRADE SUBMITTED AND APPROVED OF PUD STAGE 1 OMITTED FOR CLARITY

Residential & Hotel East-West Section

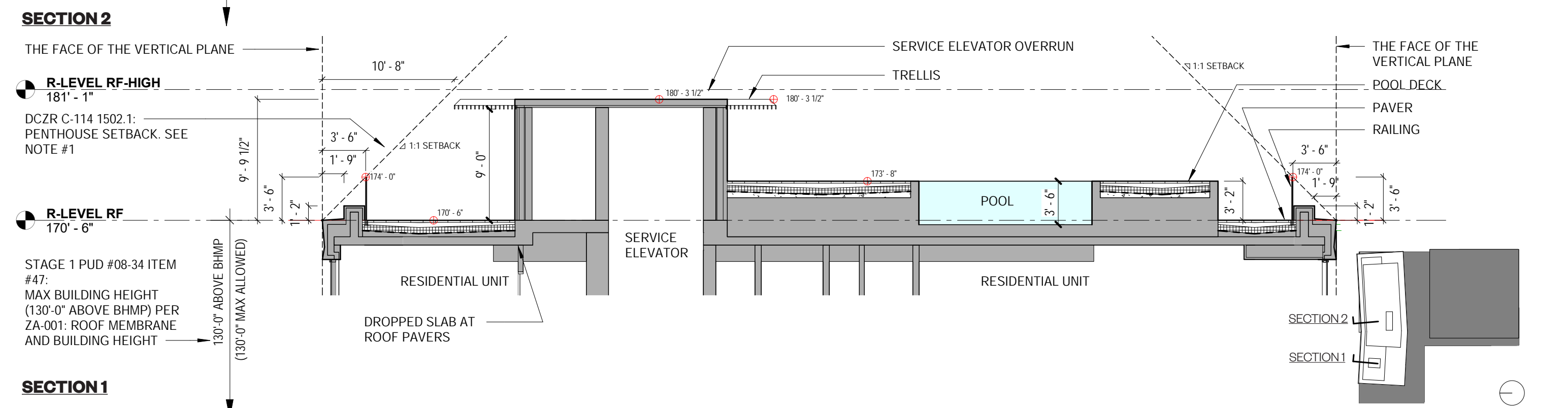
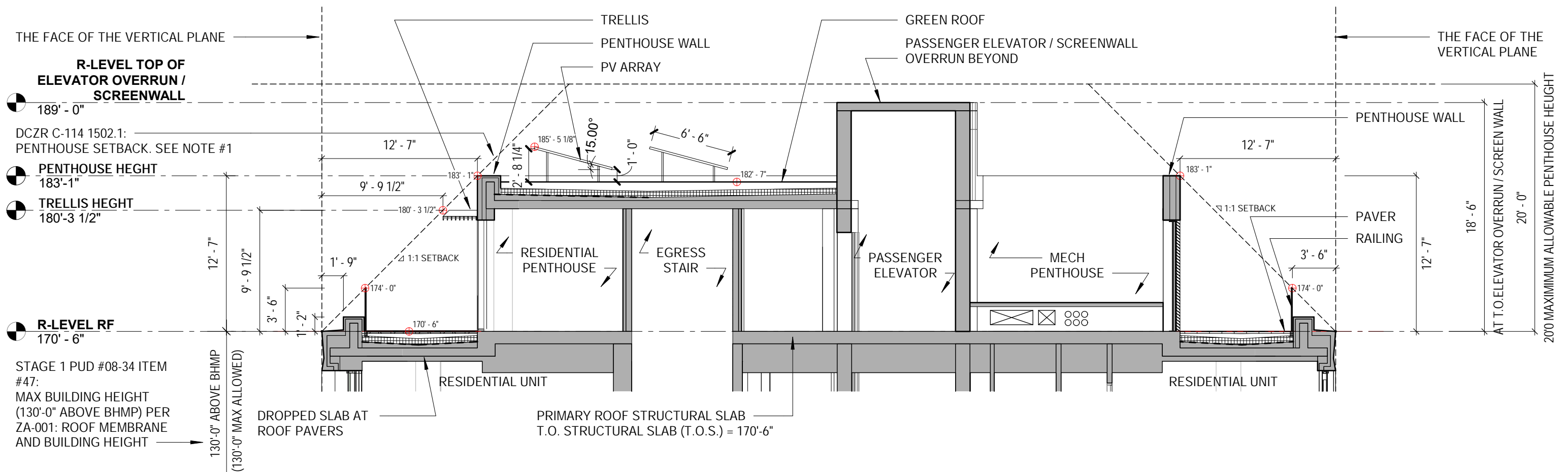
PUD Stage II Filing: Capitol Crossing III LLC and Capitol Crossing IV LLC: Square 566, Lots 861-862 (part of Record Lot 50)



NOTE:
BELOW GRADE SUBMITTED AND APPROVED OF PUD STAGE 1 OMITTED FOR CLARITY

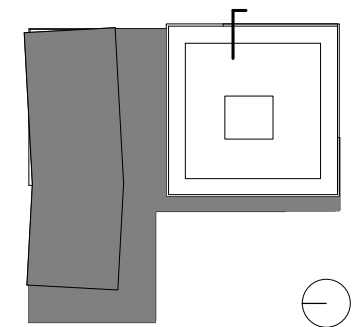
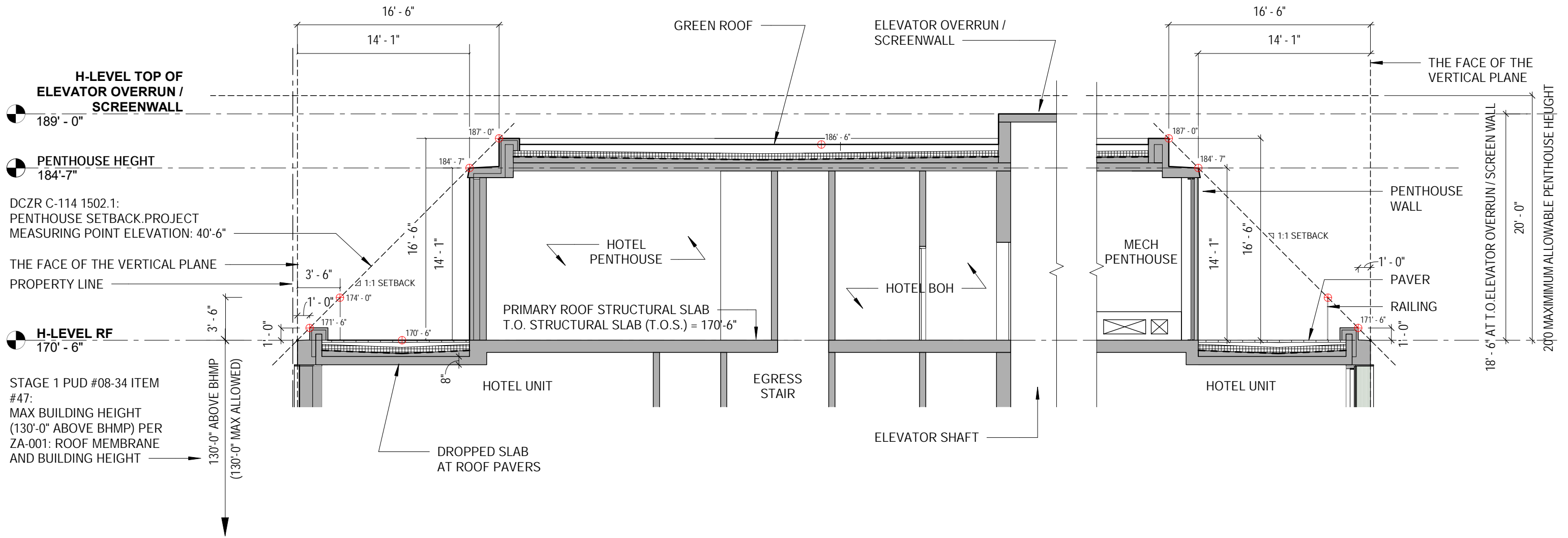
Hotel East-West Section

PUD Stage II Filing: Capitol Crossing III LLC and Capitol Crossing IV LLC: Square 566, Lots 861-862 (part of Record Lot 50)



Enlarged Section - Residential Penthouse

PUD Stage II Filing: Capitol Crossing III LLC and Capitol Crossing IV LLC: Square 566, Lots 861-862 (part of Record Lot 50)



Enlarged Section - Hotel Roof Setback

PUD Stage II Filing: Capitol Crossing III LLC and Capitol Crossing IV LLC: Square 566, Lots 861-862 (part of Record Lot 50)